

# Deriving lessons from Exemplars worldwide

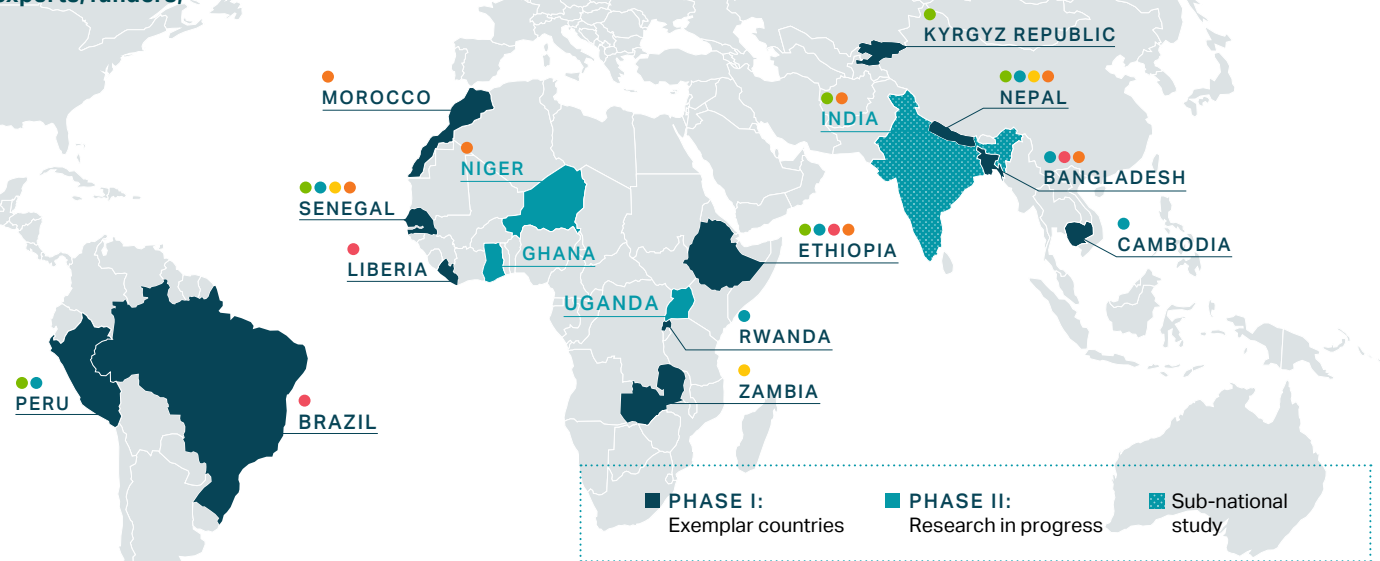
Exemplars in Global Health (EGH) brings together experts, funders, and collaborators around the globe

with the mission of identifying positive global health outliers, analyzing and understanding what makes these countries successful, and disseminating the core learnings so they can be replicated in comparable settings. EGH aims to help country-level decision-makers, global partners, and funders make strategic decisions, allocate resources, and craft evidence-based policies in consultation with both their global peers and technical advisors.

EGH is incubated at Gates Ventures, the private office of Mr. Bill Gates, in collaboration with the Bill & Melinda Gates Foundation.

“By studying positive outliers, all countries can learn how to improve their health outcomes, often dramatically. The lessons from these Exemplars have the potential to help save millions of lives.”

– Bill Gates



## CURRENT TOPIC AREAS



● STUNTING



● VACCINE DELIVERY



● NEONATAL/MATERNAL MORTALITY



● UNDER FIVE MORTALITY



● COMMUNITY HEALTH WORKERS

## NEW RESEARCH IN PROGRESS



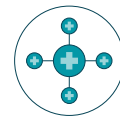
EPIDEMIC PREPAREDNESS & RESPONSE



EXPANDED NUTRITION SCOPE



MATERNAL ANEMIA



HIGH-EFFICIENCY HEALTH SYSTEMS



TECHNOLOGY FOR PRIMARY HEALTH CARE



SUPPLY CHAIN

## OUR PROCESS

### 1. CONDUCT RESEARCH

Deep analysis to identify outliers and areas where evidence can drive better outcomes



SickKids



UNIVERSITY OF  
Global Health  
EQUITY



LAST  
MILE  
HEALTH



EMORY  
UNIVERSITY



Countdown to 2030  
LONDON  
PUBLIC HEALTH  
INSTITUTE  
JOHNS HOPKINS  
BROAD INSTITUTE

### 2. SYNTHESIZE FINDINGS

Translate dense, technical findings into clear, rigorous, and actionable country narratives



EXEMPLARS  
IN GLOBAL HEALTH

Gates  
Ventures

BILL & MELINDA  
GATES foundation

### 3. DRIVE IMPACT

Support our audiences to drive maximum impact



Web platform



Strategic  
Partnerships



Dissemination  
Activities



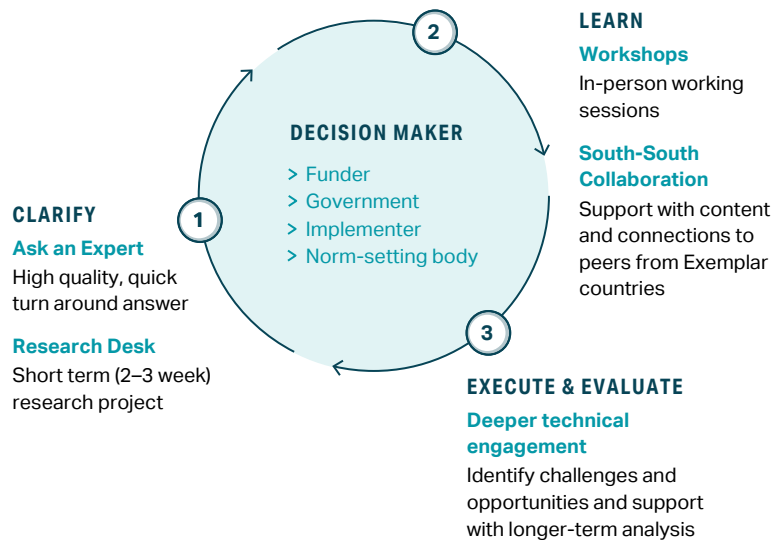
Services

## TARGET AUDIENCE

Senior- to mid-level managers are targeted to inform and influence the preparation of working documents for key executive decision makers.

	Executive	Senior-to-mid level manager	Practitioner
GLOBAL HEALTH FUNDERS	Co-chair President CEO	Director Deputy Director Senior program officer	Program Manager
NATIONAL POLICY-MAKERS	Minister	Permanent Secretary Technical Advisor	Program Manager
IMPLEMENTERS (NGOS/ GRANTEES)	Executive Director	Country Director	Field Staff
NORM-SETTING BODIES	Director General	Regional Head Practice Area Lead	Program Manager

## TAILORED SERVICES



## HOW CAN WE HELP?

The exemplars program can help when you are...

### TRYING TO GET UP-TO-SPEED ON A NEW ISSUE

Explore the basics of a problem, current data, and how similar countries have solved this problem.



**A user-friendly platform**  
to quickly learn how the most successful countries have solved major health and human capital challenges.

### DESIGNING A NEW POLICY OR PROGRAM

Find out what successful countries did in similar situations.



**Ask an Expert**  
for on-demand support to answer questions that clarify our research, insights, methodology, and conclusions.

### IMPLEMENTING A PROGRAM

Learn how to plan execution or measure progress.



**Guided Learning and Technical Advisory**  
for hands-on support as you explore new solutions and optimize existing programs.

**Anything else?** We are open to new suggestions— please let us know how our research, services, and expert network can be helpful to you. Contact us at [www.exemplars.health](http://www.exemplars.health)